



Reviewed for Code Compliance
Inspection Division
Approved with Conditions

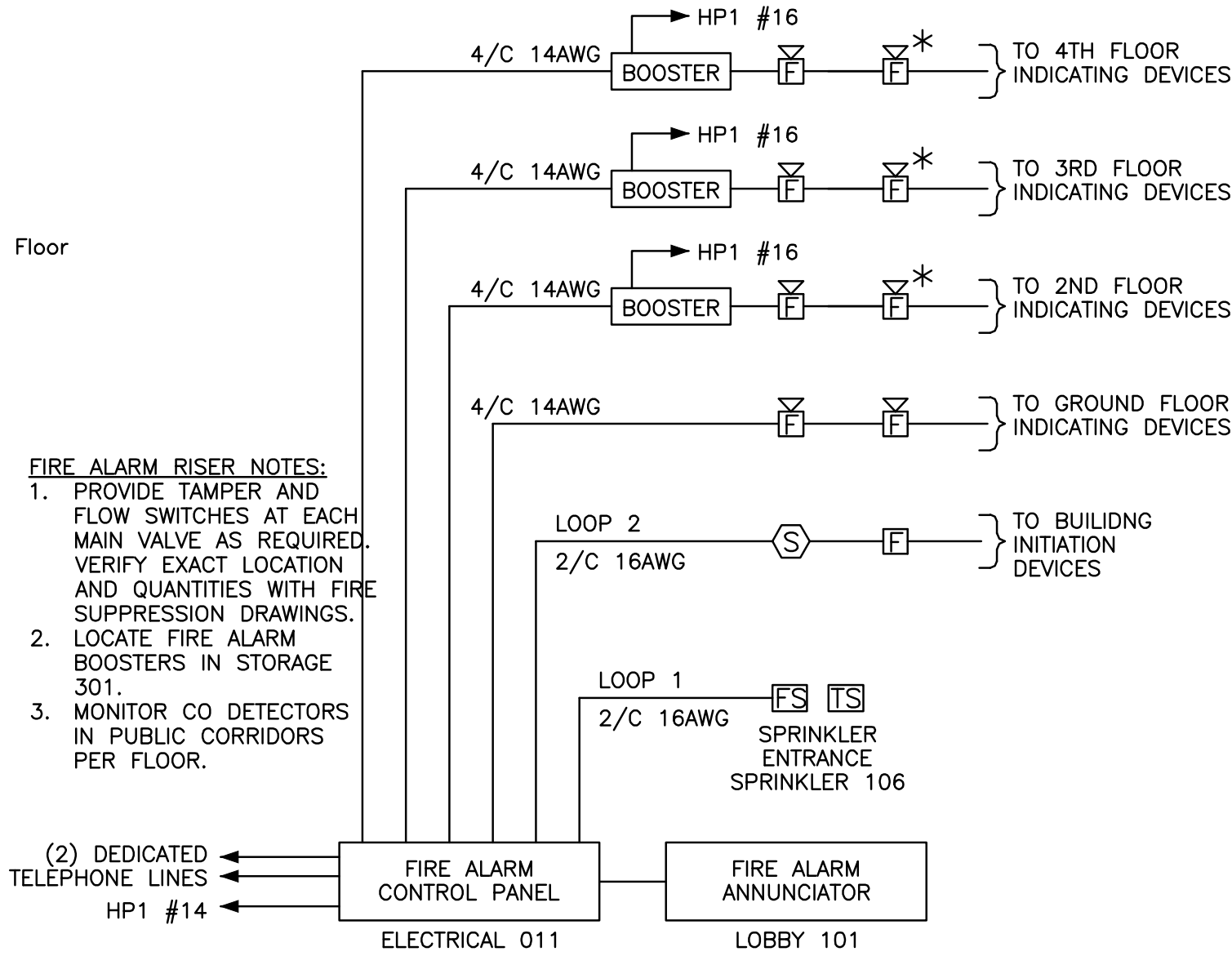
Date: 05/16/14

PLAN SYMBOLS

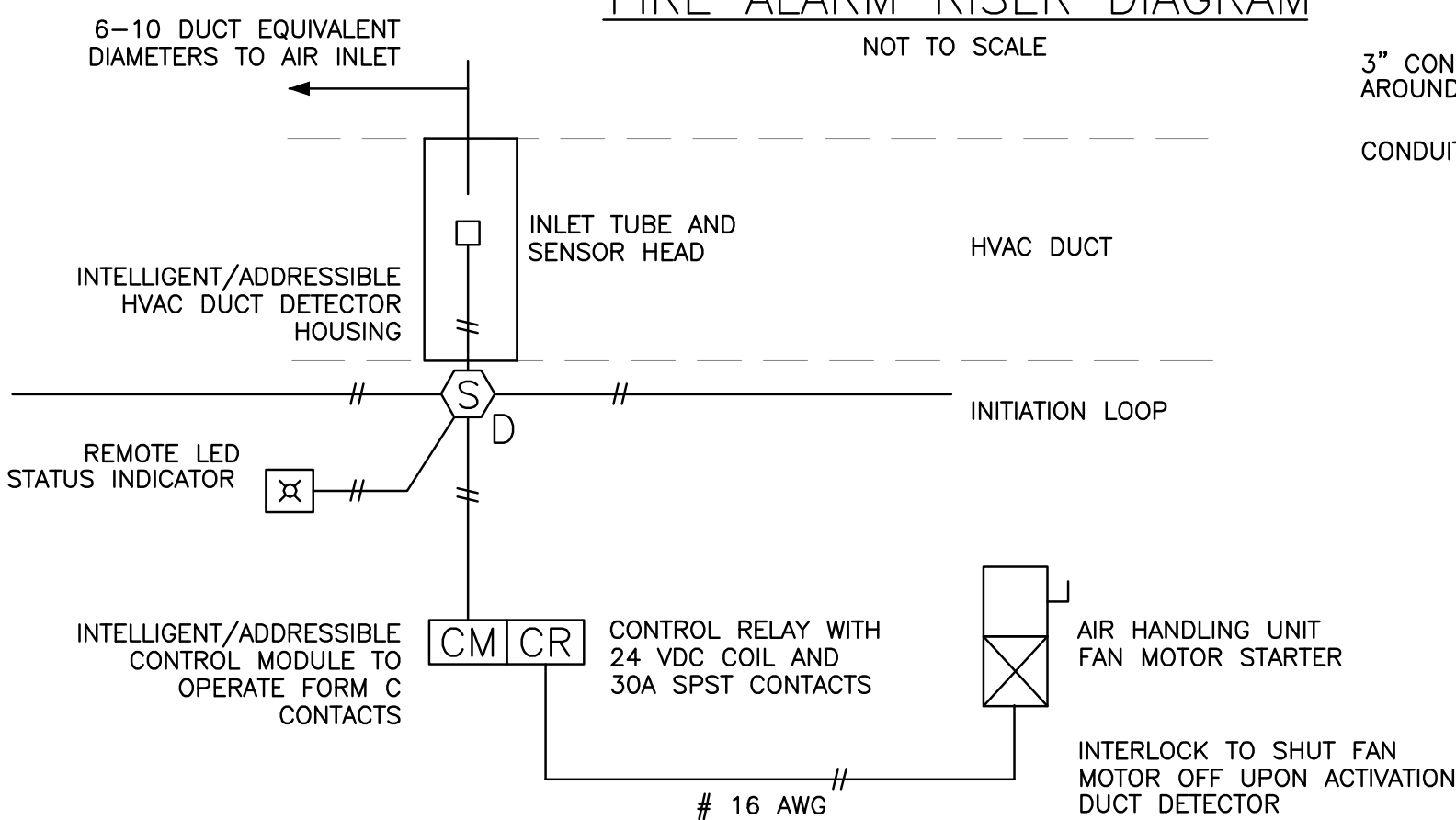
SYMBOL	DESCRIPTION
	125V, 20A, DUPLEX GROUNDED RECEPTACLE GF1 = Ground Fault Type WP = Weatherproof AC = Mount 6" Above Sink or Counter 36" = Indicates Exact Mounting Height Above Finished Floor
	125V, 20A, SIMPLEX GROUNDED RECEPTACLE
	125V, 20A, QUAD GROUNDED RECEPTACLE
	TEL/DATA OUTLET
	CABLE TELEVISION OUTLET
	DOOR INTERCOM STATION
	ELECTRIC PANELBOARD (See Plans for Details)
	CONTROL PANEL (See Plans for Details)
	UNIT LOAD CENTER
	FIRE ALARM SMOKE DETECTOR Indicates Localized Detector
	FIRE ALARM CARBON MONOXIDE SENSOR Indicates Localized Detector
	FIRE ALARM HEAT DETECTOR
	FIRE ALARM AUDIO VISUAL Indicates Visual Only
	FIRE ALARM PULL STATION
	#2 CEILING MTD. FLUORESCENT LIGHT J1 Circuit Number Fixture Designation
	W6 WALL MOUNTED LIGHT FIXTURE Fixture Designation
	R1 RECESSED/CEILING MOUNTED LIGHT FIXTURE Fixture Designation
	S3 LIGHT/DEVICE SWITCH 3 = Three-Way Type
	M CEILING MTD. LTG CONTROL MOTION SENSOR
	MOD MOTOR OPERATED DAMPER (Provided Under Div 15)
	SM MANUAL MOTOR SWITCH
	JB JUNCTION BOX
	RH 120V, DIRECT CONNECTION, RANGE HOOD
	DP 120V, DIRECT CONNECTION, DISPOSER
	DP 120V, DIRECT CONNECTION, DISHWASHER
	EO 120V, DIRECT CONNECTION, ELECTRIC OVEN
	CO 120V, DIRECT CONNECTION, CONVECTION OVEN
	FP 120V, DIRECT CONNECTION, FIREPLACE
	WC 120V, DIRECT CONNECTION, WINE COOLER
	WHP 120V, DIRECT CONNECTION, WATER HEATER PUMPS

SINGLE LINE DIAGRAM SYMBOLS

SYMBOL	DESCRIPTION
	225 AF 200 AT CIRCUIT BREAKER
	Ampere Trip Rating
	ELECTRICAL CONNECTION
	GROUND CONNECTION
	EQUIPMENT ENCLOSURE
	TRANSFORMER
	200/3 FU:175 FUSED SWITCH
	Ampere Rating/No. of Poles Fuse Size
	UTILITY CO. SERVICE METER



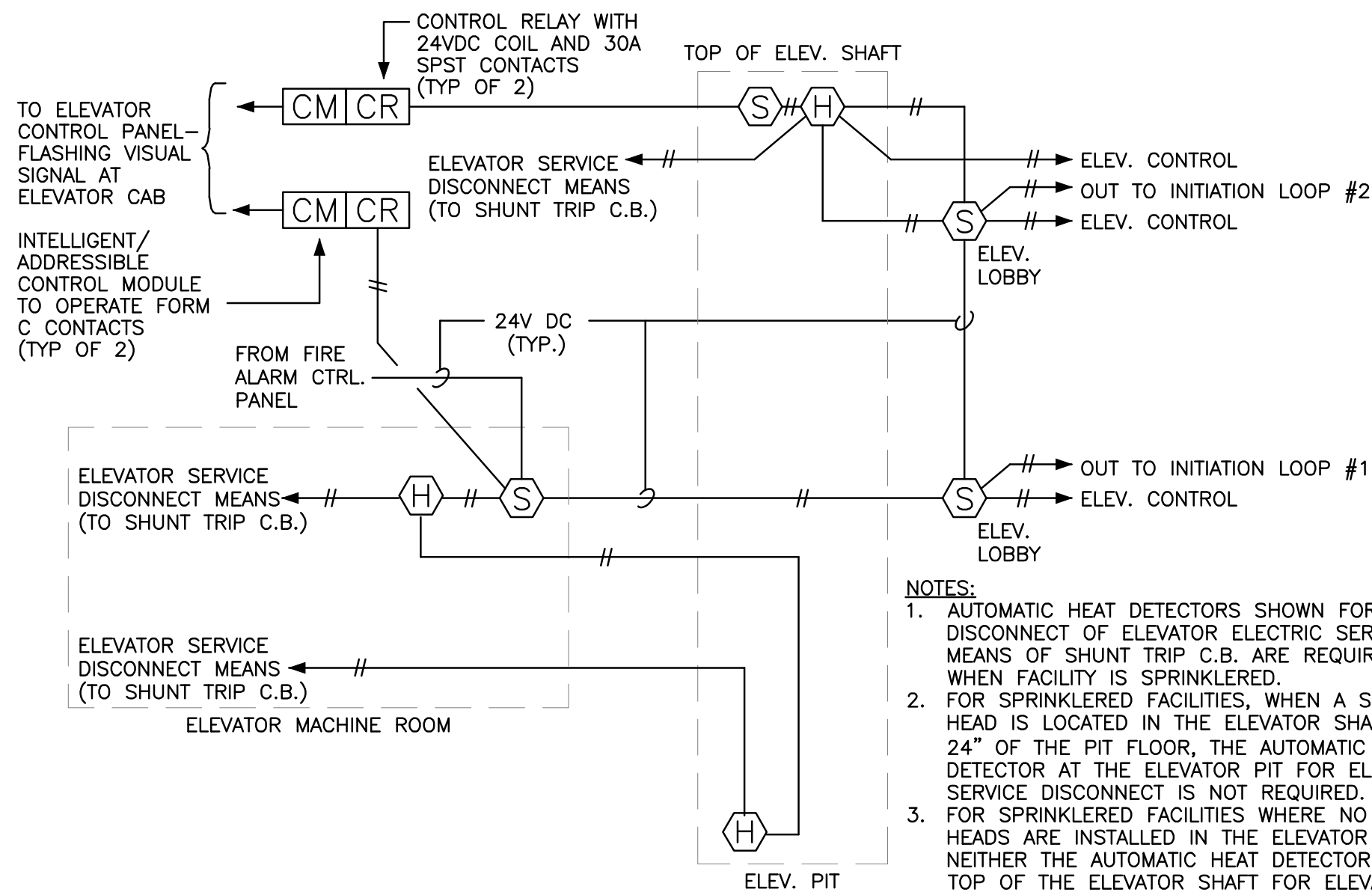
FIRE ALARM RISER DIAGRAM



INSTALL DUCT DETECTORS IN CONFORMANCE WITH NFPA 90A

PROVIDE SINGLE DUCT DETECTOR FOR HVAC UNITS SIZED 2000 CFM - 4000 CFM.
PROVIDE DUCT DETECTORS IN BOTH SUPPLY AND RETURN DUCTS FOR HVAC UNITS
SIZED ABOVE 4000 CFM.

HVAC FIRE ALARM INTERFACE WIRING DIAGRAM

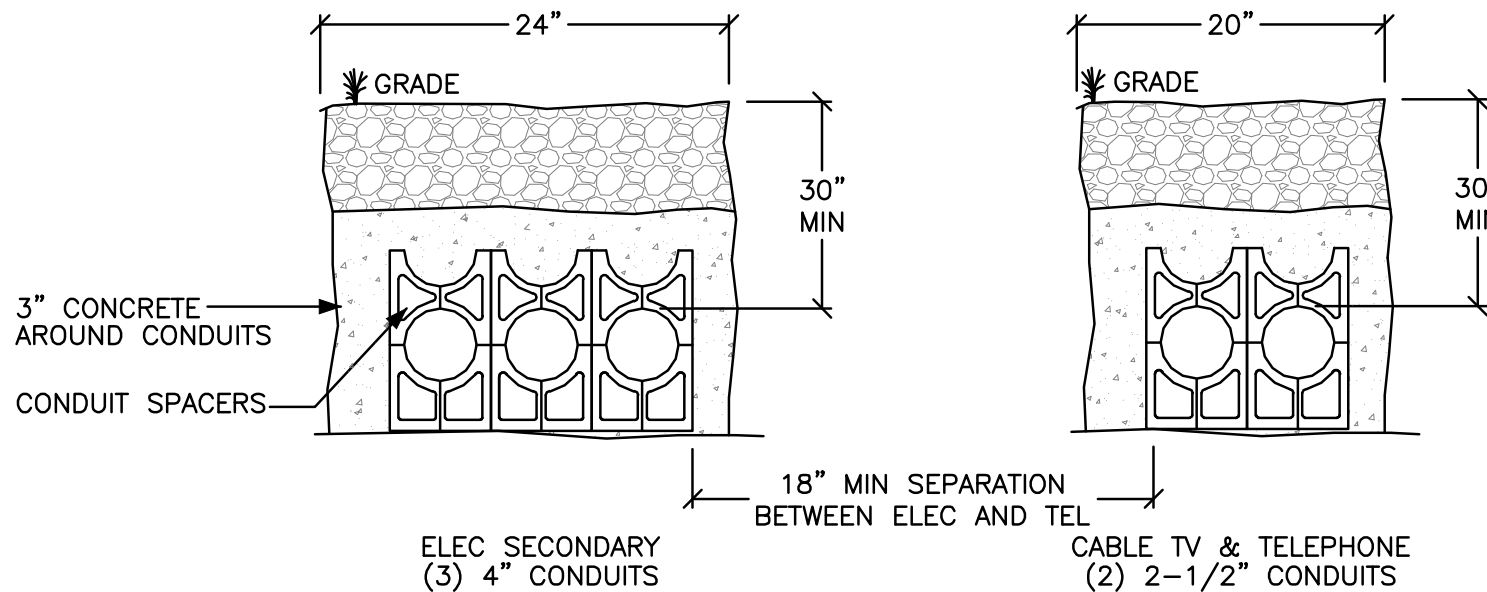


- NOTES:
1. AUTOMATIC HEAT DETECTORS SHOWN FOR AUTOMATIC DISCONNECT OF ELEVATOR ELECTRIC SERVICE BY MEANS OF SHUNT TRIP C.B. ARE REQUIRED ONLY WHEN FACILITY IS SPRINKLERED.
 2. FOR SPRINKLERED FACILITIES, WHEN A SPRINKLER HEAD IS LOCATED IN THE ELEVATOR SHAFT WITHIN 24" OF THE PIT FLOOR, THE AUTOMATIC HEAT DETECTOR AT THE ELEVATOR PIT FOR ELEVATOR SERVICE DISCONNECT IS NOT REQUIRED.
 3. FOR SPRINKLERED FACILITIES WHERE NO SPRINKLER HEADS ARE INSTALLED IN THE ELEVATOR SHAFT, NEITHER THE AUTOMATIC HEAT DETECTOR AT THE TOP OF THE ELEVATOR SHAFT FOR ELEVATOR DISCONNECT, NOR THE AUTOMATIC SMOKE DETECTOR AT THE TOP OF THE ELEVATOR ARE REQUIRED.
 4. ADJUST QUANTITY OF SMOKE DETECTORS AND INITIATION LOOPS AS NECESSARY TO ACCOMMODATE ALL ELEVATOR STOPS.

INSTALL DETECTORS AND WIRING IN CONFORMANCE WITH STATE ELEVATOR CODE.

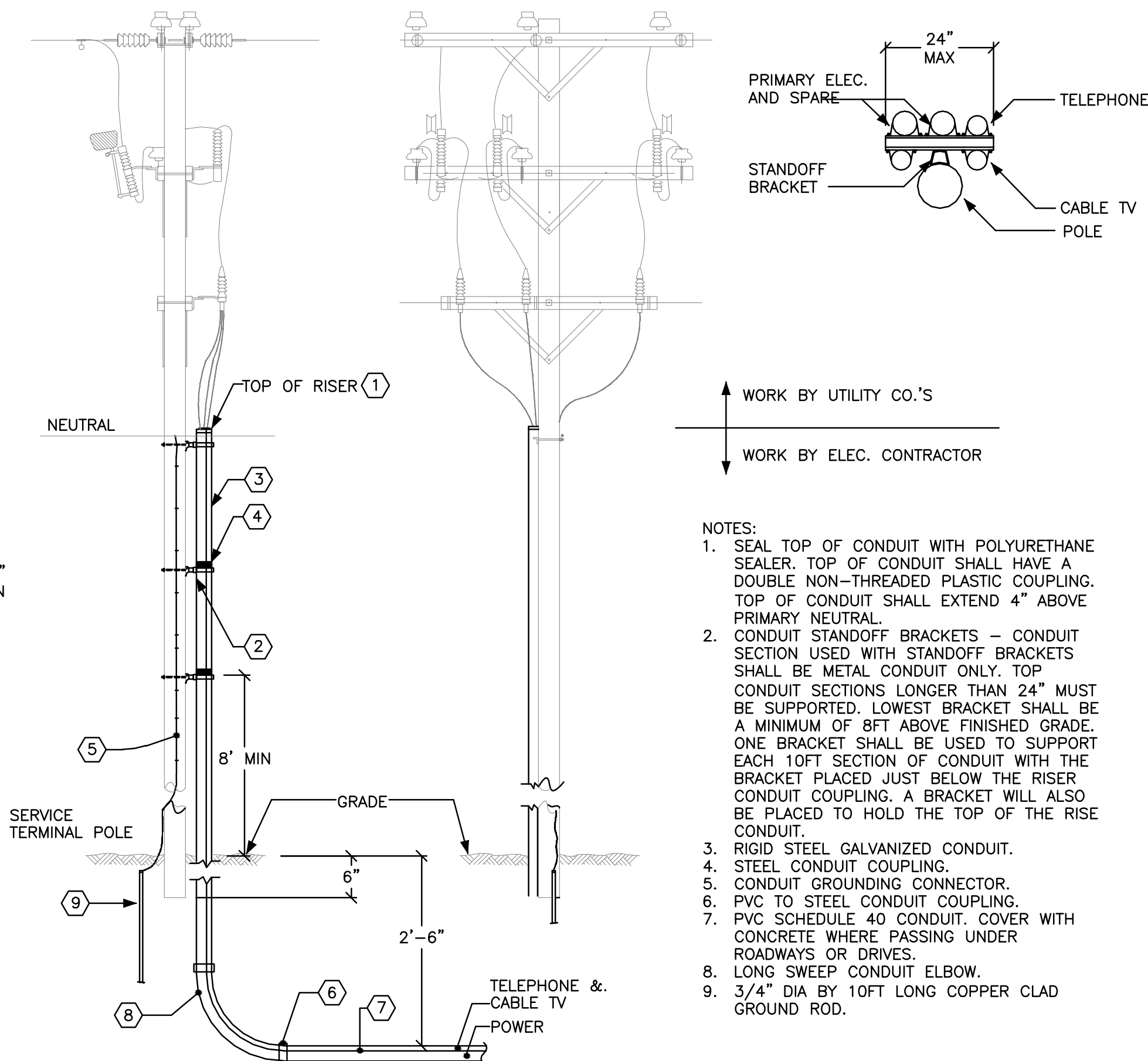
ELEVATOR FIRE ALARM INTERFACE WIRING DIAGRAM

NOT TO SCALE



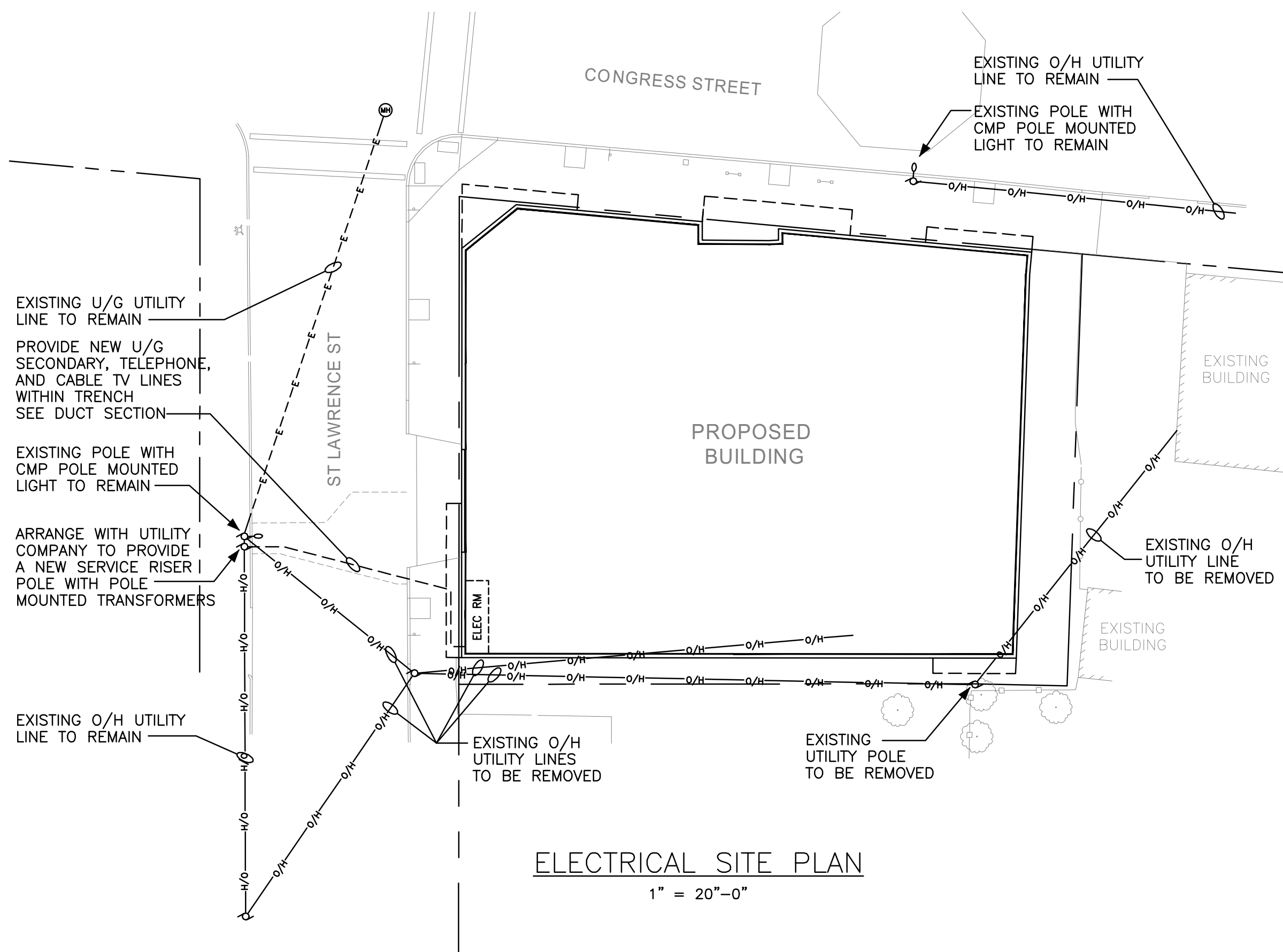
DUCT SECTIONS

NOT TO SCALE



UTILITY RISER POLE DETAIL

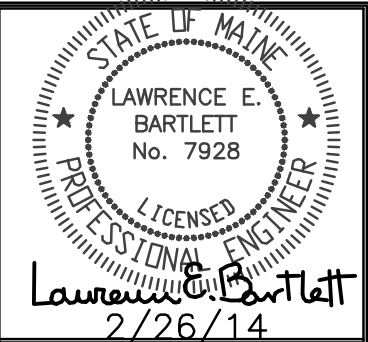
NOT TO SCALE



ELECTRICAL SITE PLAN

1" = 20'-0"

NORTH



Prepared For:
118 on Munjoy Hill, LLC
118 Congress Street
Portland, Maine

Consultant:
Bartlett Design
LIGHTING & ELECTRICAL ENGINEERING
118 Congress Street
Portland, Maine 04101
TEL: (207) 445-5447 FAX: (207) 445-5448

Architect:
ARCHITYPE architects
48 Union Wharf Portland, Maine 04101
(207) 772-0022 ARCHITYPE@ARCHITYPEPA.COM

Project:
118 ON MUNJOY HILL
118 CONGRESS STREET
PORTLAND, MAINE

Revisions:
01/27/14 50% Pricing Set
02/26/14 100% Construction Documents

Date: 27 JAN 2014
Scale: As Noted
ELECTRICAL
SITE PLAN & DETAILS

E0.01